



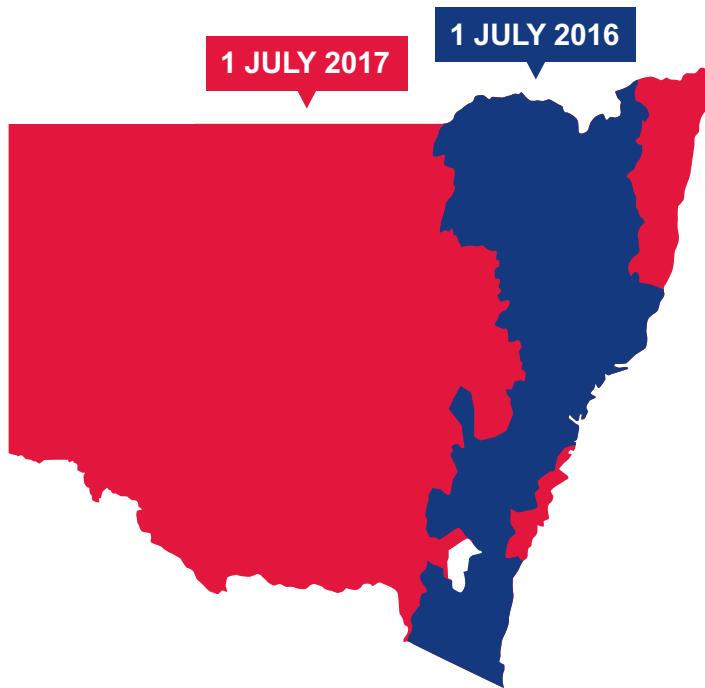
What you need to know about the National Disability Insurance Scheme rollout in NSW



Visit www.ndis.nsw.gov.au for more information about the rollout of the NDIS in NSW



The NDIS is rolling out in NSW now. When you can access the NDIS depends on where you live.



People living in the following locations can access the NDIS now:

- ✓ Central Coast
- ✓ Hunter New England
- ✓ Nepean Blue Mountains
- ✓ Northern Sydney
- ✓ South Western Sydney
- ✓ Southern NSW
- ✓ Western Sydney

From 1 July 2017, people living in the following locations will be able to access the NDIS:

- ✓ Illawarra Shoalhaven
- ✓ Mid North Coast
- ✓ Murrumbidgee
- ✓ Northern NSW
- ✓ South Eastern Sydney
- ✓ Sydney
- ✓ Western NSW
- ✓ Far West

People who currently receive specialist disability supports through the NSW Government or a service provider funded by the NSW Government will move to the NDIS as it rolls out. How and when people with disability access the NDIS will depend on the type of support they receive now and where they live.

Current supports will continue until a person has moved to the Scheme and their NDIS plan is in place.

How and when you will be able to access the NDIS also depends on what supports, if any, you currently receive.

With so many people coming into the scheme in such a short time it is important that there is a planned approach to how they access the NDIS.

Although transition for people accessing all types of services start from 1 July, most people living in large and small residential centres, group homes, hostels, attendant care, in-home support or alternative family placement will be the first to move into the NDIS.

Most people who attend day, recreation and life skills programs as well as people who receive support from therapy, early or behaviour intervention programs or use case management services will also begin to move into the NDIS from July 2017.

Most people accessing respite, personal care assistance, personal care, meal services, home modifications and transport services will move to the NDIS from January 2018. They will need to provide evidence of their disability as part of their NDIS access request.

The National Disability Insurance Scheme (NDIS) gives people with disability choice and control over the supports they receive.



Information, Linkages and Capacity Building (ILC)

ILC includes programs and services to support you to prepare for the NDIS ahead of the rollout in each area. These will assist you with pre-planning, finding local services and information about the types of supports that are available.



Continuity of support

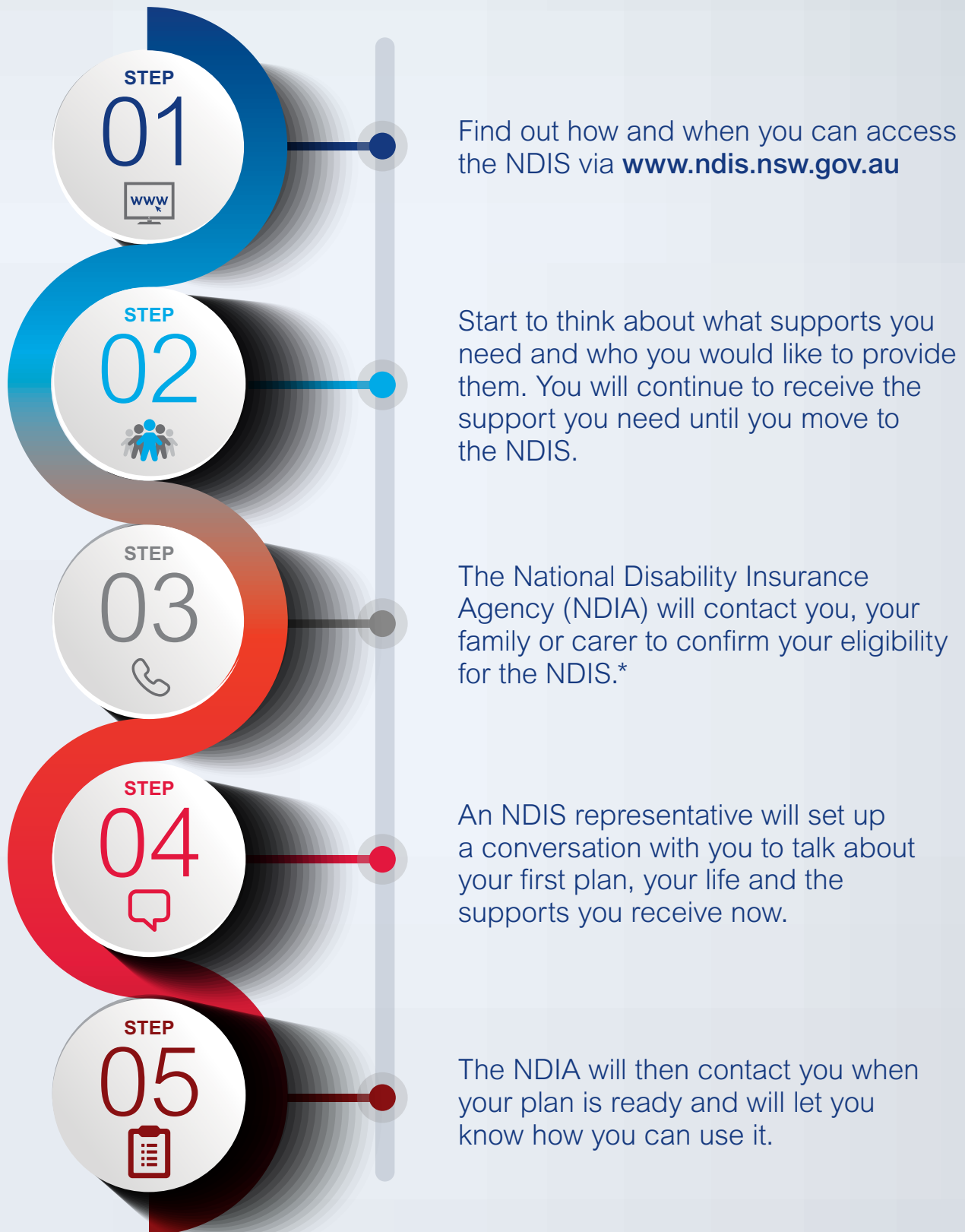
Continuity of support means no one will be disadvantaged in the move to the NDIS. People who had been receiving specialist disability support, but are not eligible for the NDIS, will maintain the same outcomes they received before the NDIS.



Quality and safeguards

A national quality and safeguarding system will be in place once the rollout is complete. Until it is in place, the Transitional Quality and Safeguard Working Arrangements will be in place.

What should you do now?



* The NSW Government will contact people who already receive disability supports. If you do not currently receive disability support, you should contact the NDIA once the NDIS is available in your area.